

# ROKADE WIRELESS VIBRATION ANALYZER

 **WVS50**



Vibration Meter & Analyzer

FFT & Time Waveform

IP67, Portable & Ex

# ROKADE

## Wireless Vibration Analyzer

ROKADE Wireless Vibration Analyzer (WVS50) is a portable Single Axis Piezo-electric Wireless Accelerometer which operates on Android Mobile / Tab.

ROKADE WVS50 is a wireless ultra-low noise accelerometer with 10 kHz bandwidth that exceeds the characteristics above all of most conventional accelerometers.



## Features

### Multiple parameter collection

- Support for multiple signal types: ACC, Vel, Disp, Env, BC, FFT, Time waveform

### Wireless Signal acquisition

- Wireless communication range up to 50 meters (depending on field condition)

### Ultra low power consumption

- 10 hours of operation on a single charge



### Quick installation

- Built-in magnetic suction base

### Premium protection

- IP67 industrial grade protection with Ex Proof certification

### Easy to charging

- Standard USB connector helping you charging at any time

## Common Machine Faults Diagnosis



Unbalance



Misalignment



Bearing Defects



Cavitation



Structural Resonance



Gear Wear

# Functions

## Vibration Meter

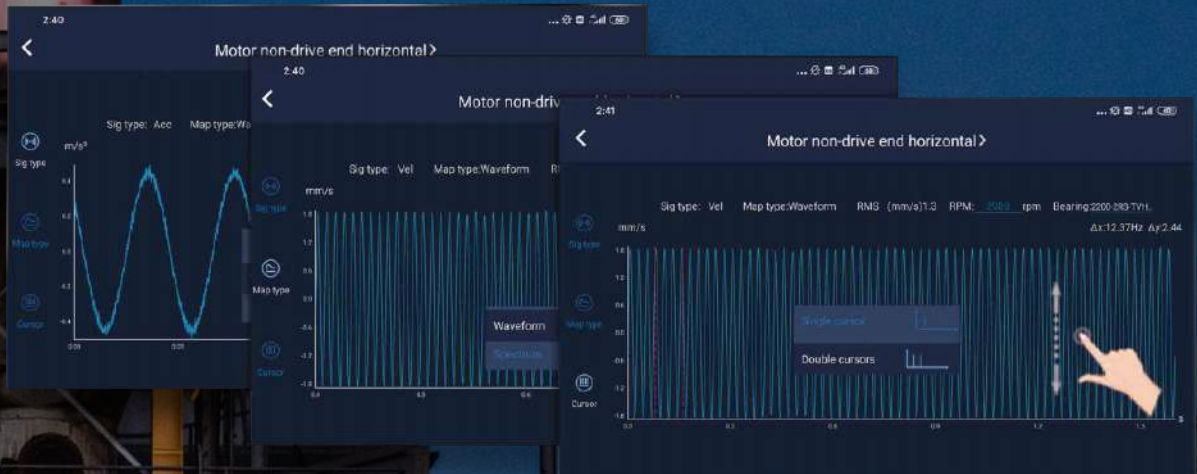


## Vibration Analysis

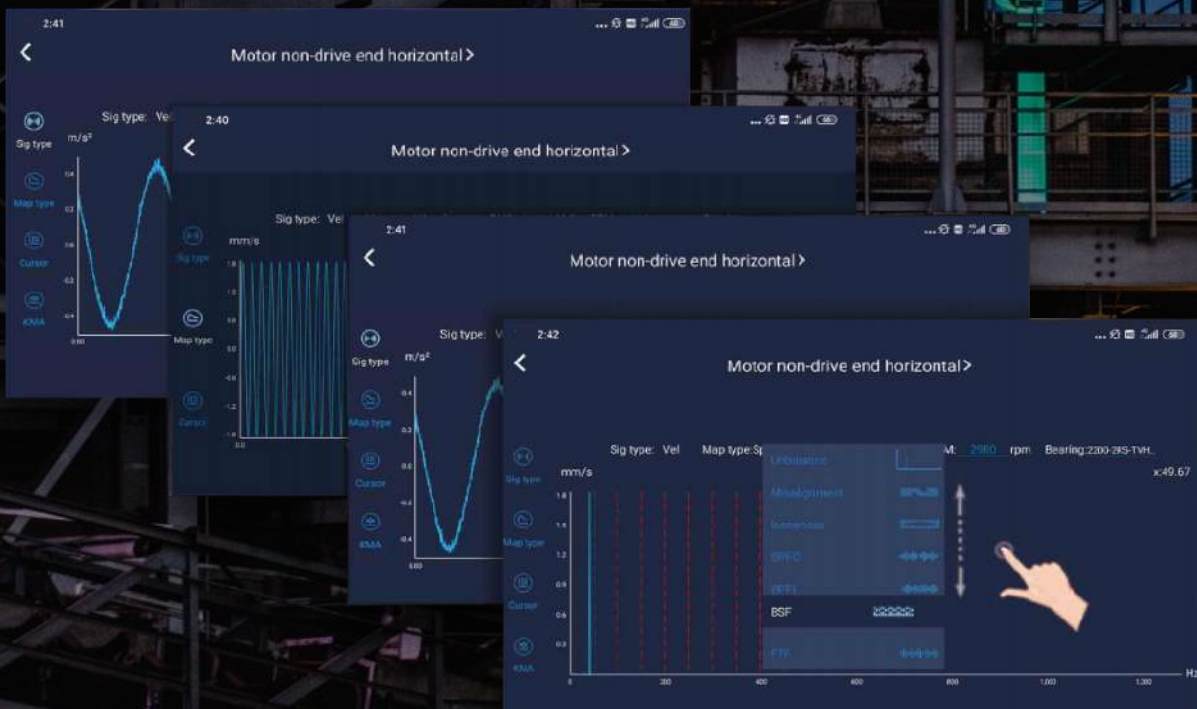


# Functions

## Time Waveform Analysis



## FFT Spectrum Analysis



# Complete Kit

| NAME                  | QTY |
|-----------------------|-----|
| Display Unit          | 1   |
| Stainless steel probe | 1   |
| Multi Surface Adapter | 1   |
| Charger (USB)         | 1   |
| Portable Bag          | 1   |



Portable Bag



Display unit



Stainless steel probe



Multi Surface Adapter



Charger (USB)



## Specifications

|                                      |   |
|--------------------------------------|---|
| <b>Metrology</b>                     |   |
| Sampling frequency                   | Max 25.6 KHz  |
| Sensing element                      | Piezoelectric / Annual shear mode                                   |
| Full scale                           | 50 g  |
| Signal-to-Noise ratio                | > 80 dB   |
| Frequency response                   | ± 3dB      0.4 Hz - 10 KHz  |
| Accuracy                             | + / - 5% @ 150 Hz, 1 g  |
| Signal                               | RMS, Peak, peak to peak, Bearing status value                       |
| FFT resolution                       | 6400 lines  |
| Waveform type                        | Acceleration, Velocity, Displacement, Envelope                      |
| Bearings condition                   | BC<1, well; 1<BC<2, lubrication; 2<BC, failure                      |
| Measurement duration                 | 3s typical (affected by distance & communication)                   |
| Frequency range                      | Vel & Disp (10 ~ 1,000 Hz); Acc (2 ~ 5000Hz)                        |
| Vibration setup                      | Automatic definition of the measurements based on the machine class |
| <b>Physical</b>                      |   |
| Dimensions                           | 41.8 x 69.4 mm  |
| Weight                               | 228 g   |
| Mounting                             | M6 threaded hole  |
| LED indicator                        | Red, Green, Blue  |
| <b>Environmental</b>                 |   |
| Operating temperature                | -30°C ~ 70°C  |
| Protection                           | IP67  |
| Explosion proof                      | Exib IIC T4 Ga  |
| ISO standard compliance              | ISO 10816-3   |
| Humidity                             | 0% to 95% relative humidity (RH)                                    |
| <b>Battery</b>                       |   |
| Type                                 | Li-ion  |
| Operating lifetime                   | more than 10 hours (Continuously)                                   |
| Charging time                        | 1 - 2 hours   |
| Capacity                             | 750 mAh   |
| Rechargeable                         | with marching charger   |
| <b>Communication</b>                 |   |
| Wireless protocol                    | Wifi point to point   |
| Wireless range                       | Upto 50 meters depending on the environment                         |
| Standard mobile system compatibility | Android   |

## OUR CUSTOMERS



## OUR PRESENCE



### ● OUR BRANCHES

#### THANE :

5, U.K. Industrial Estate, Behind Durian Furniture, Opp. Oswal Park, 2nd Pokharan Rd, Thane ( W ) - 400 601, (M.S)  
Tel.: 022 2173 7777

#### MUMBAI :

4 / A Wing, Bharat Indl Estate, Off. Lake Road, Opp. Hind Rectifier Co., Bhandup (W), Mumbai – 400 078 (M.S)  
Tel.: 022 2173 7777

#### NAVI MUMBAI :

R / 375, TTC Industrial Area, Rabale, Navi Mumbai - 400701 (M.S)  
Tel.: 022 2173 7777

#### PUNE :

Gat No # 256, Indrayani East, Jyotibanagar, Talawade, Pune 412 112 (M.S)  
Tel.: 022 - 21737777

#### DELHI :

Plot No. 76-D, Udyog Vihar Phase 4 Gurugram, Haryana-122001.

#### CHENNAI :

746/3, 5th street, Icf South colony, Anna nagar, Chennai - 600038

#### Email :

sales@rokadegroup.com  
kumar@rokadegroup.com  
hsr@rokadegroup.com

#### Mobile :

+91-8898886622  
+91-9820027242

#### Website :

www.rokadegroup.com

### ● Our Representatives :

AHMEDABAD | BANGALORE | HYDERABAD |  
KOLKATA | RAIPUR | VISAKHAPATNAM